



Phenotypic diversity and stability of early maturing Barnyard Millet (*Echinochloa* sp.) germplasm for grain yield and its contributing traits

Kuraloviya M¹, Vanniarajan C^{1*}, Sudhagar R² & Vetriventhan M³

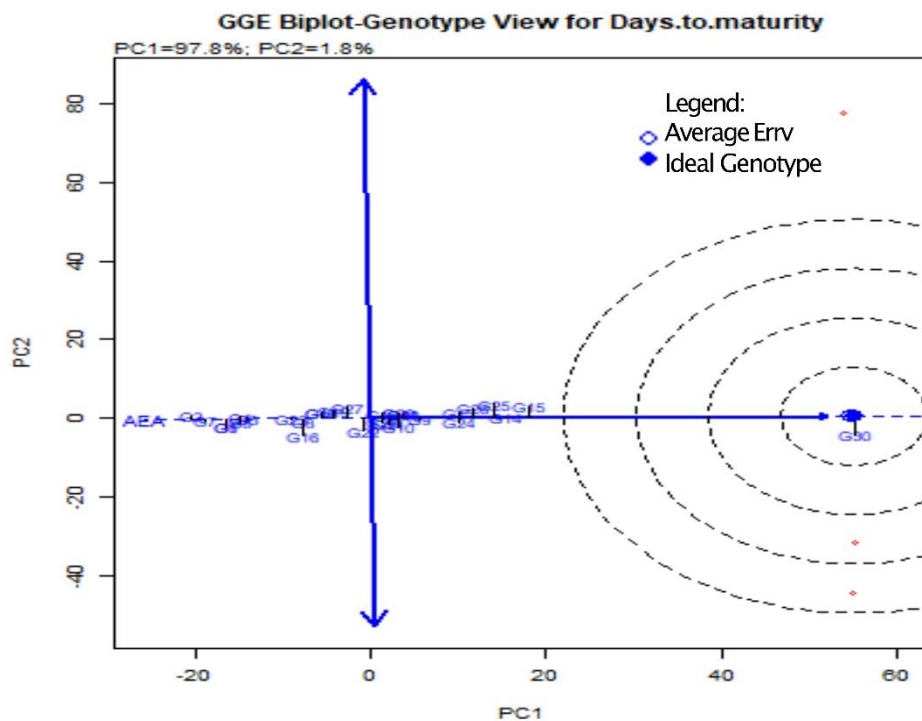
¹Department of Plant Breeding and Genetics, Agricultural College and Research Institute, Madurai - 625 104, TNAU, Tamil Nadu, India

²Sugarcane Research Station, Melalathur - 635806, TNAU, Vellore, Tamil Nadu, India

³Genebank, International Crops Research Institute for the Semi-Arid Tropics (ICRISAT), Patancheru – 502 324, Hyderabad, Telangana, India

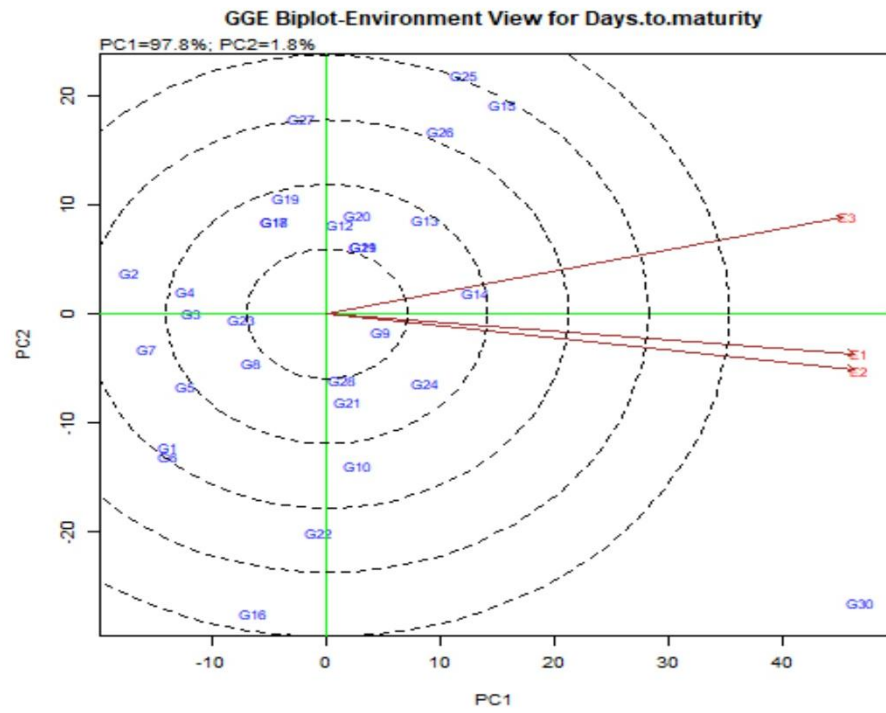
Supplementary Data

A

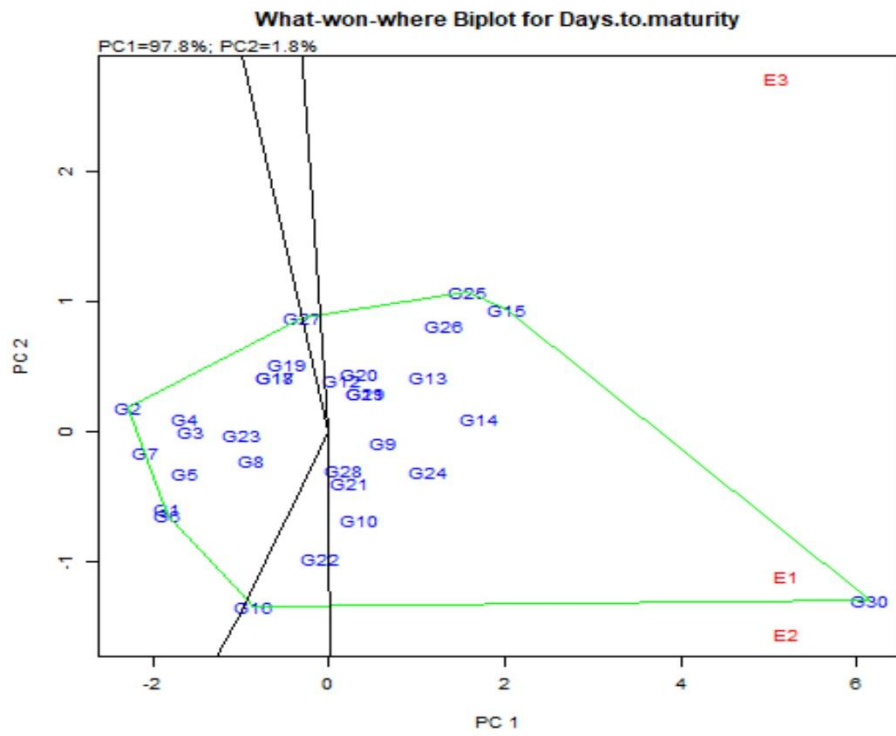


2

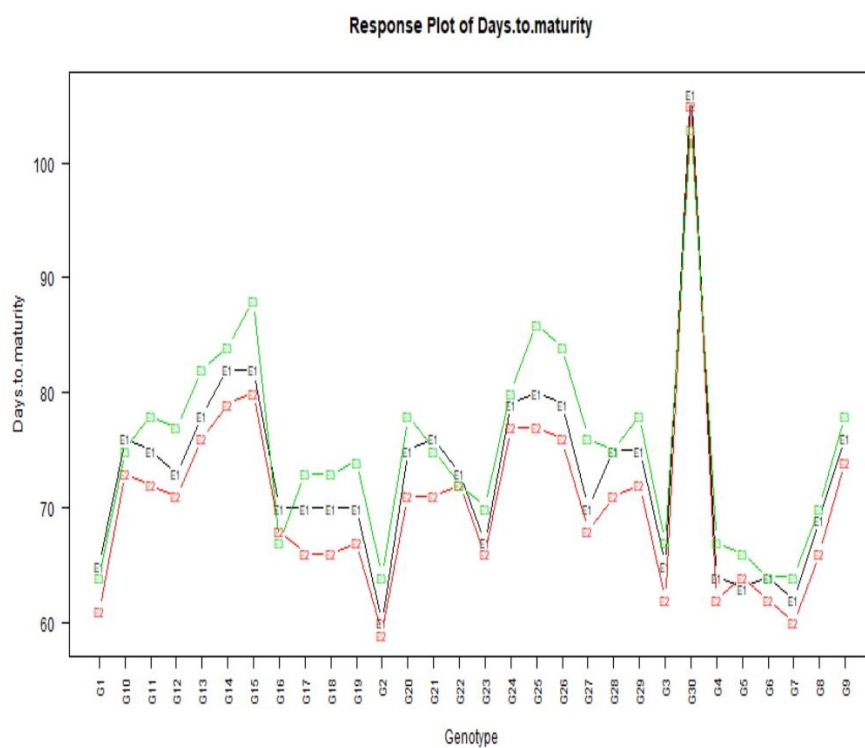
B



C

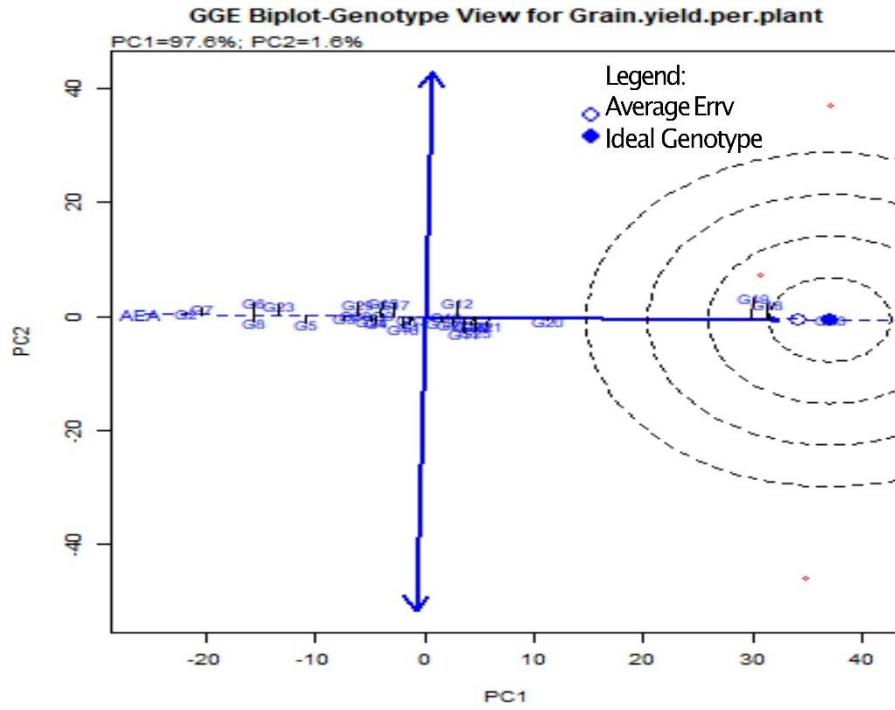


D

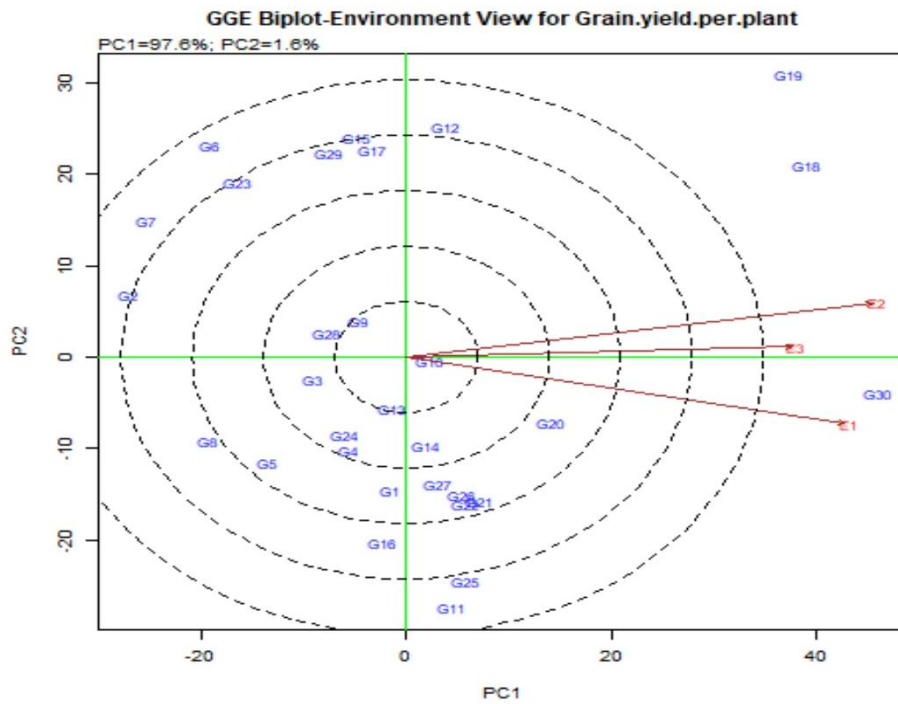


Suppl. Fig. S1 (A-D) — GGE biplots for days to maturity. (A) genotypes view; (B) environment view, (C) what-won-where view; and (D) response plot

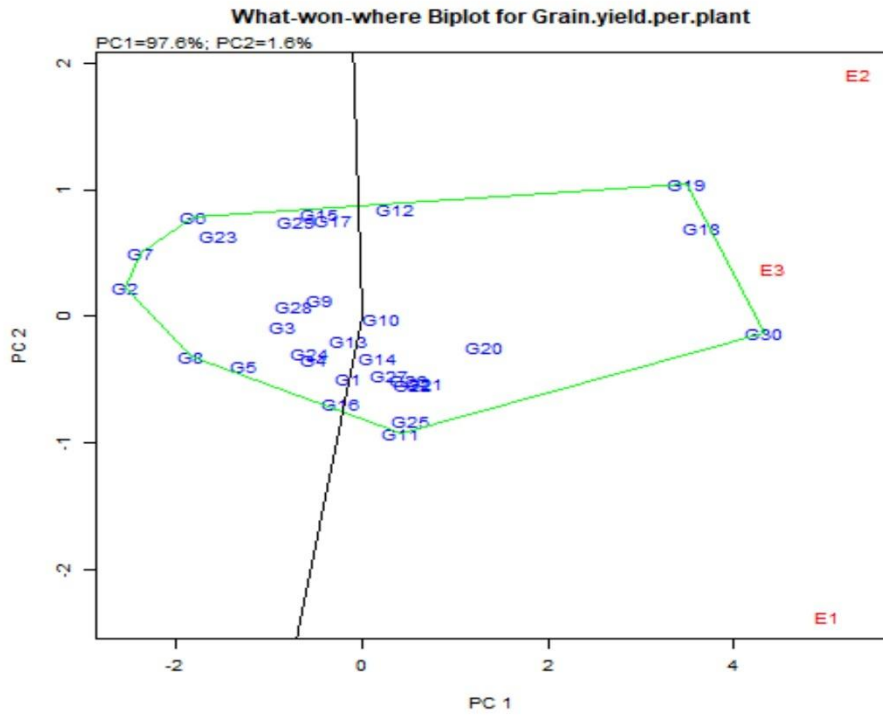
A



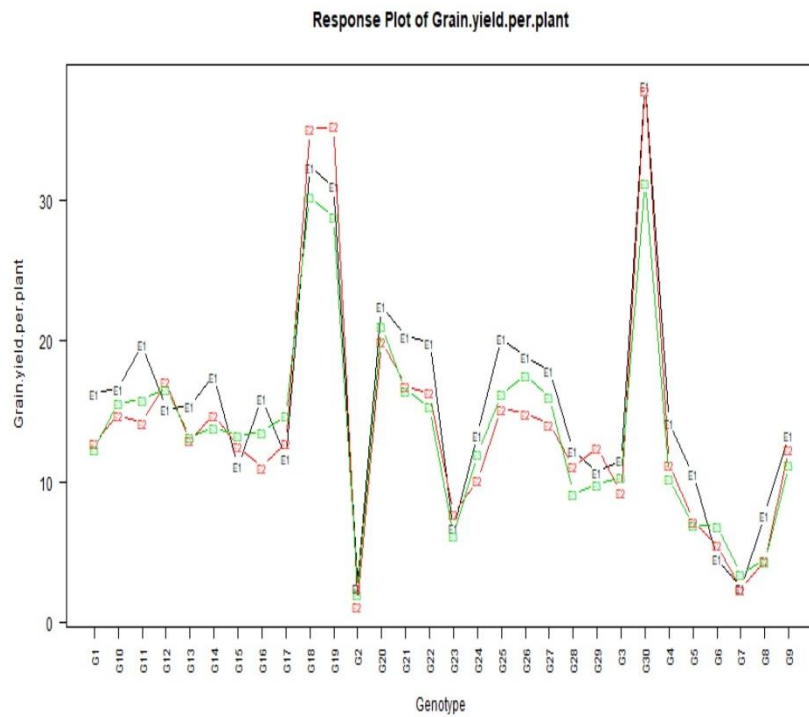
B



C



D



Suppl. Fig. S2 (A–D) — GGE biplots for grain yield per plant. (A) genotypes view; (B) environment view, (C) what-won-where view; and (D) response plot